

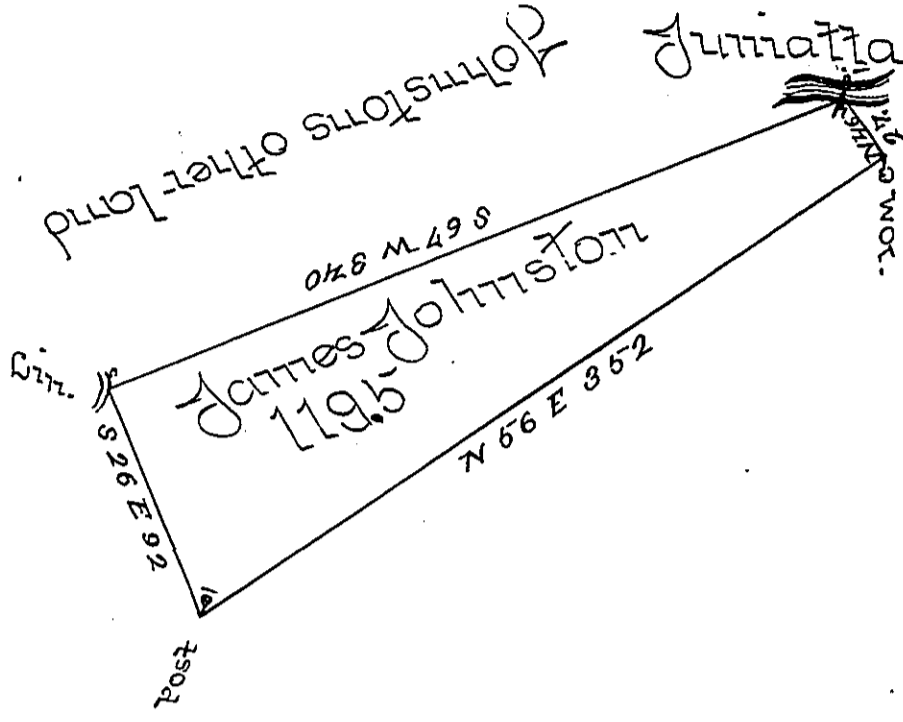
Courses Dist<sup>ces</sup>

N 56 E 352

N 76 W 27

S 67 W 370

S 26 W —



The Draught of a tract of land situate in Wayne town-  
 ship Cumberland County containing one hundred &  
 Nineteen Acres & five tenths & the usual allowance of six  
 per Cent for roads &c<sup>a</sup> surveyed for James John-  
 ston May the 25<sup>th</sup> in pursuance of a Warrant from  
 The Honorable the Vice President of the Supreme  
 Executive Council Dated Dec<sup>r</sup> the 20<sup>th</sup> 1784

John Wickers Esq<sup>r</sup> Survr<sup>r</sup> Gen<sup>l</sup>      J<sup>r</sup> Jas<sup>s</sup> Harris D.S.

*IN TESTIMONY that the above is a copy of the original remaining on file in  
 the Department of Internal Affairs of Pennsylvania, made  
 conformably to an Act of Assembly approved the 16th day of  
 February, 1833, I have hereunto set my Hand and caused  
 the Seal of said Department to be affixed at Harrisburg,  
 this fourth day of October 1898.*

*James W. Latta*  
 Secretary of Internal Affairs.